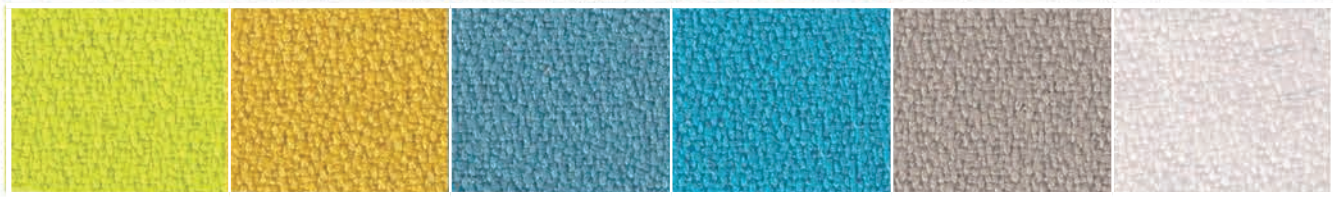


RIVESTIMENTI E FINITURE

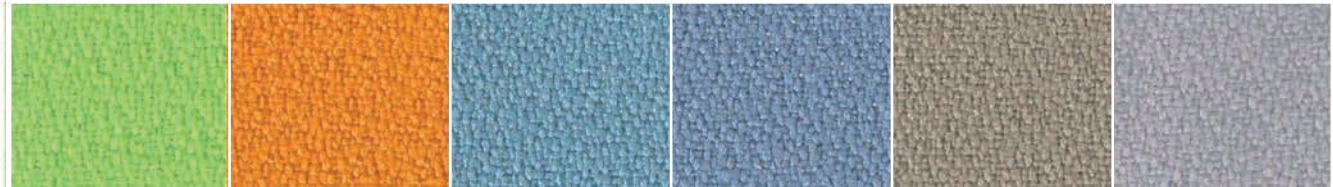


MIRAGE

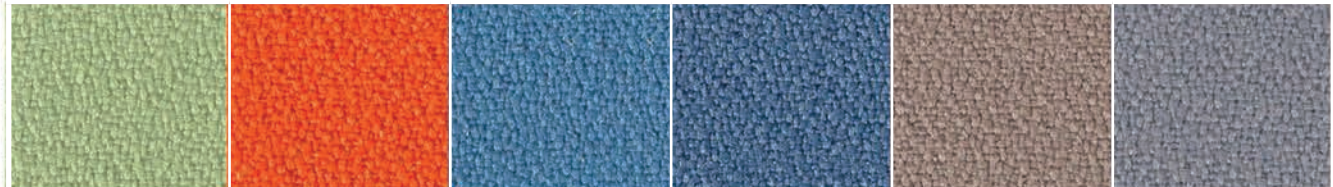
Tessuto | Fabric | Tissu | Stoff



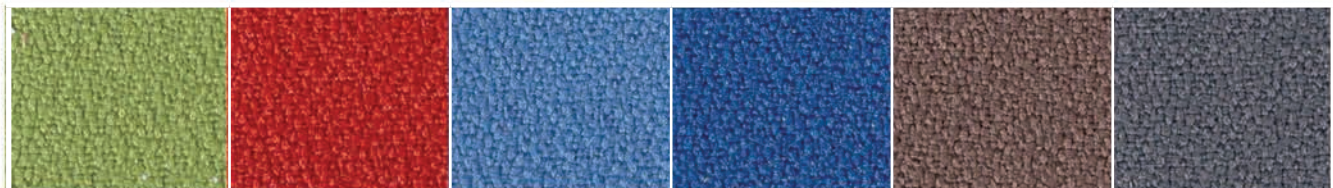
462 53 366 367 532 999



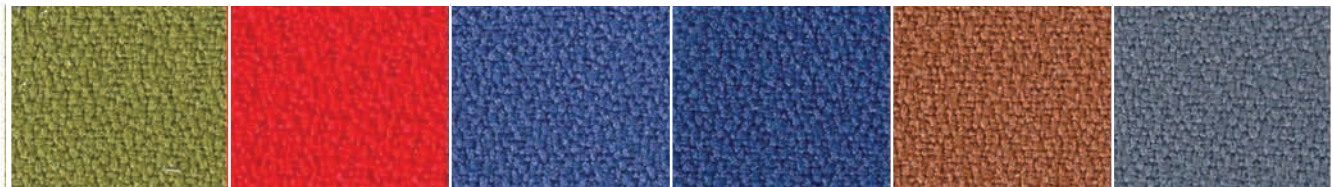
463 66 386 377 519 643



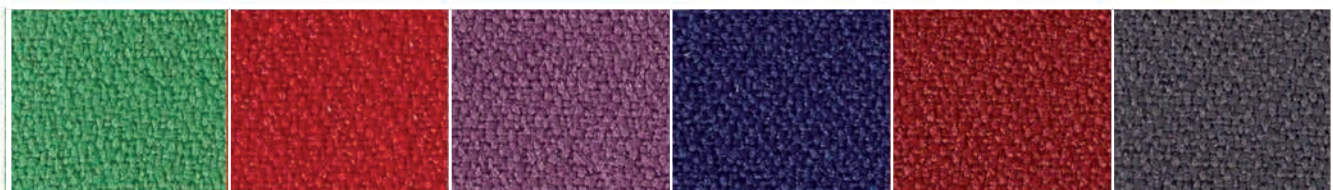
425 133 379 378 533 629



464 120 380 331 534 625



426 180 263 332 119 636



443 231 175 334 572 607



496 236 234 333 569 573



411 173 262 343 571 651

MIRAGE E 6000

Tessuto | Fabric | Tissu | Stoff



6532 6053 6462 6367 6999



6519 6066 6463 6366 6643



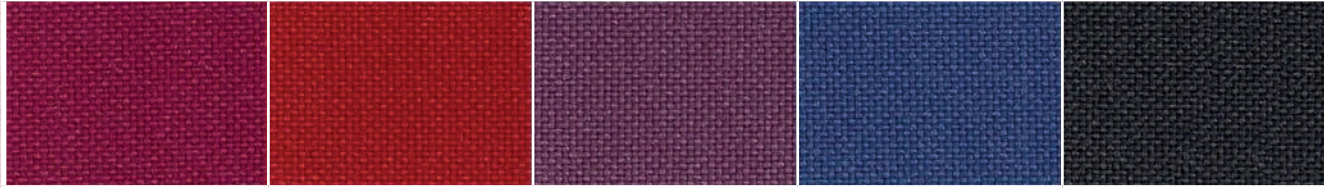
6533 6133 6464 6380 6629



6534 6120 6426 6378 6625



6569 8180 6496 6331 6571



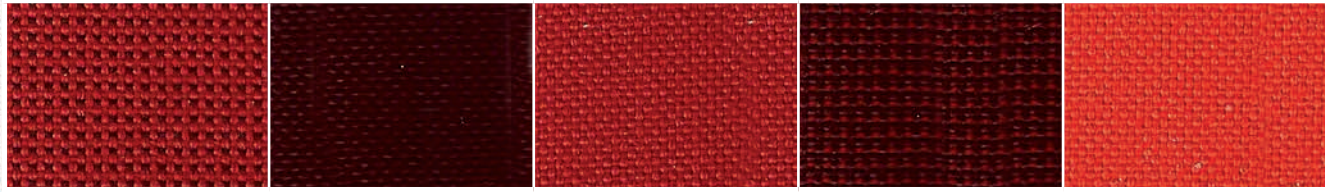
6173 6231 6175 6332 6573



6234 6236 6262 6333 6651

KING/L

Tessuto | Fabric | Tissu | Stoff



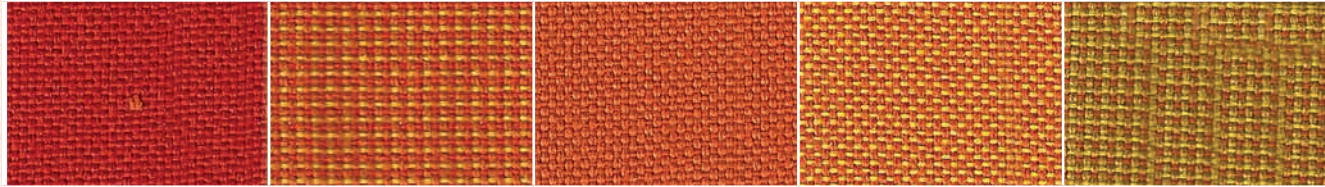
4528

4017

4027

4517

4004



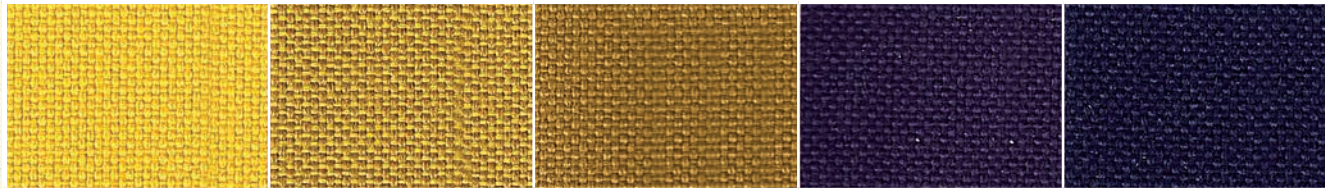
4527

4930

4030

4630

3920



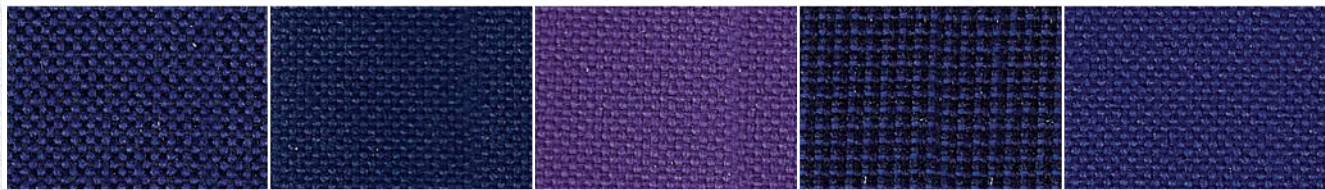
3090

3520

3020

5004

6017



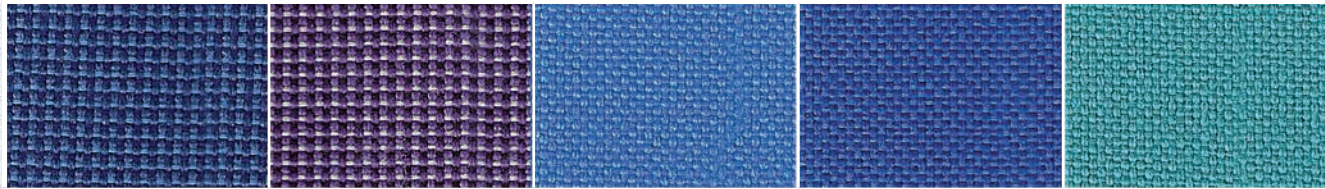
6580

6079

5015

6617

6080



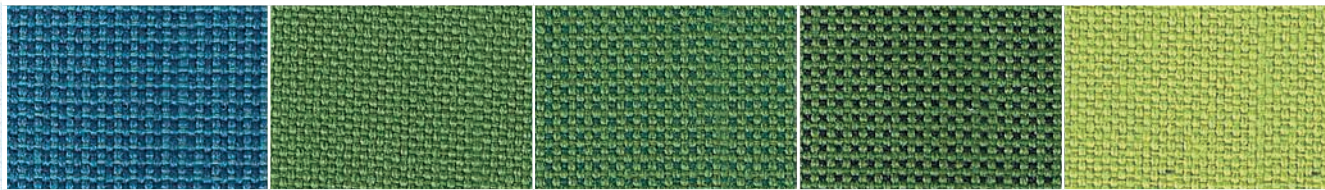
6516

9506

6070

6571

7026



6937

7019

7519

9706

7041



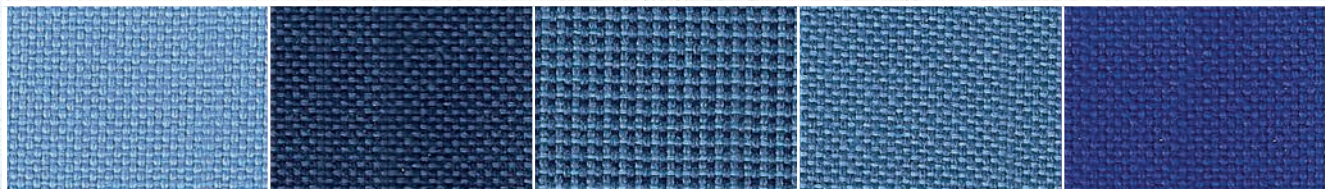
9703

9704

6016

6517

6043



6056

6579

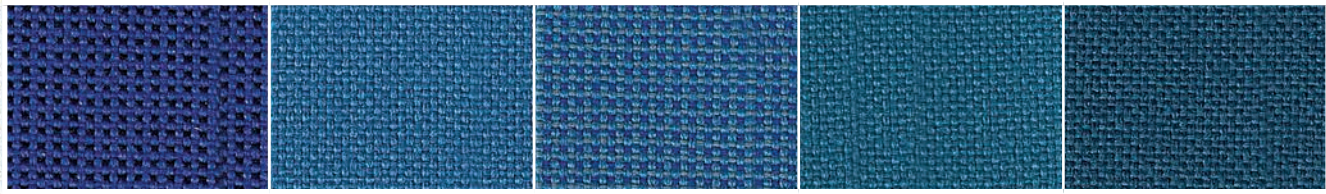
6943

6071

6572

KING/L

Tessuto | Fabric | Tissu | Stoff



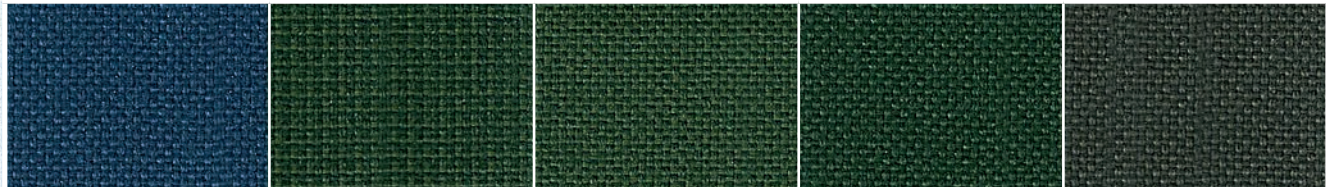
6007

6507

6037

VIOLINE 599

6531



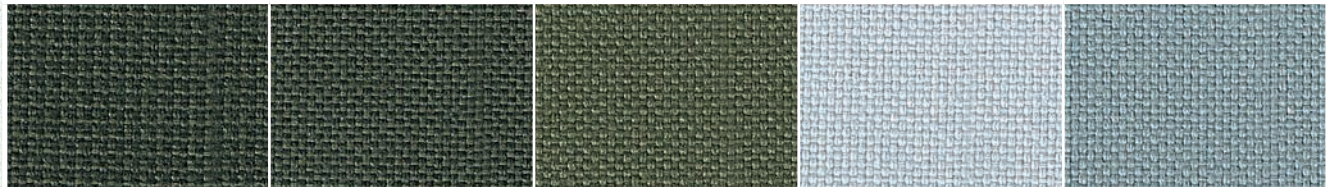
6031

7936

7536

7036

7020



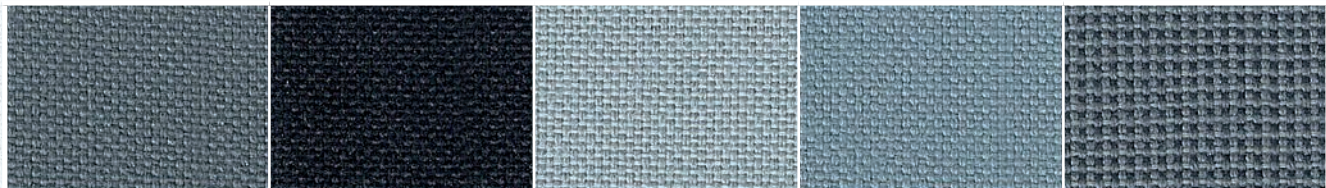
7920

7520

7034

8048

8004



8007

8033

8504

8014

8507



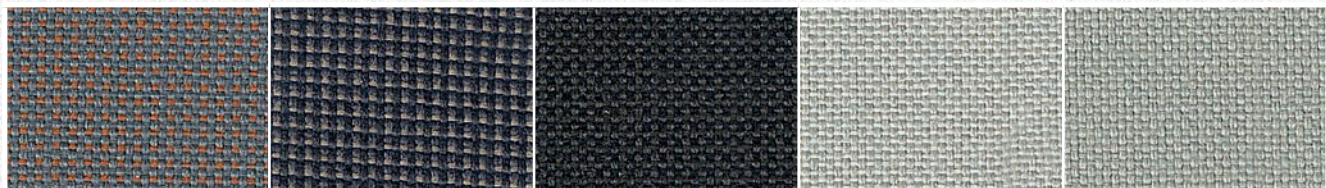
8534

8514

8510

8010

2514



8508

8511

2912

1530

1030



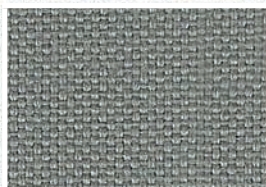
2017

2012

1025

1010

1930



1041

ZEUS FR

Eco-pelle | Artificial Leather | Simili cuir | Kunstleder



1B4

4HO

4I5

4HJ

4L1



4LA

4IC

4HP

5H9

5HO



5L1

5HP

6KN

6M7

5I1



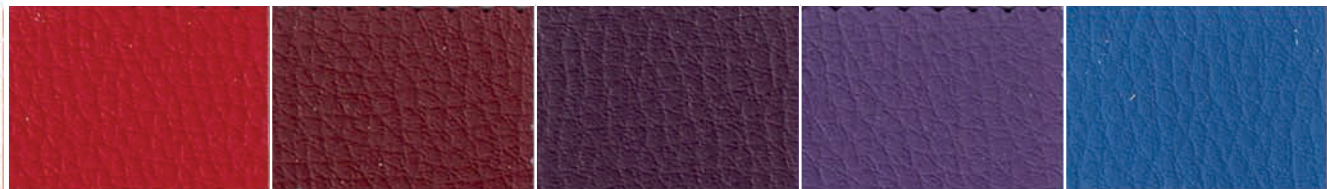
5IA

3CV

7ES

7FI

7F3



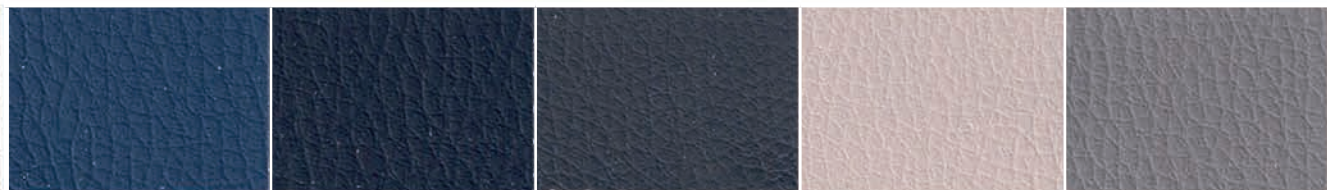
6KO

6ME

8H9

8H8

8HG



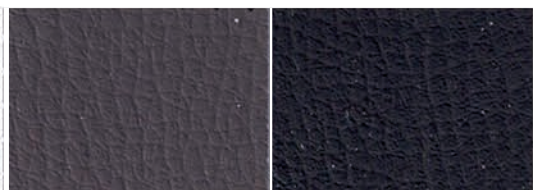
8I1

8IA

2F1

2DO

2E8



2ED

901

TREVI-TREVI STYLE

Tessuto | Fabric | Tissu | Stoff



ELBA s

Velluto | Velvet | Velours | Samt



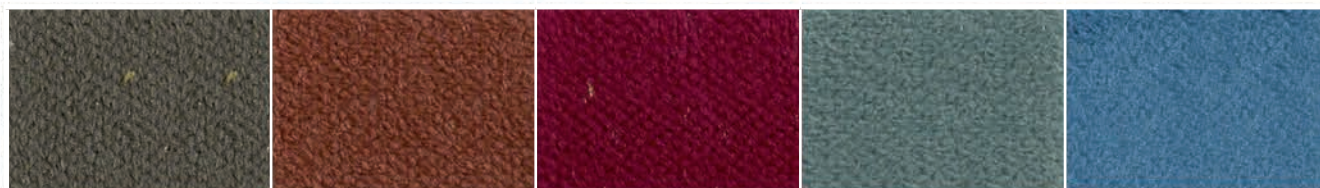
610 64 518 488 616



519 62 63 454 603



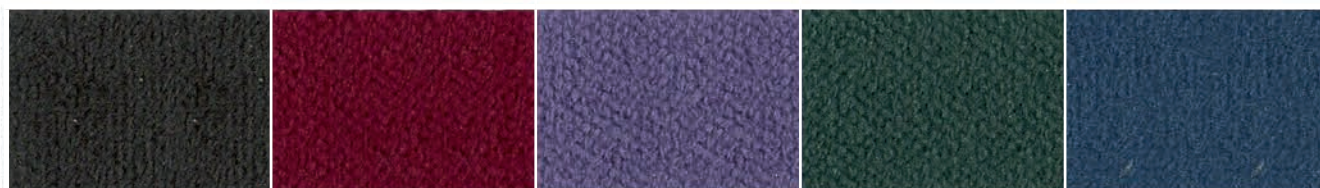
517 109 516 452 401



564 108 205 451 365



565 220 168 483 359



557 219 253 453 360



566 218 651 455 317

ROMA FR

Velluto | Velvet | Velours | Samt



LEGNO

Legno | Wood | Bois | Holz



MIRAGE – MIRAGE/E 6000

Composizione (Composition)	100% Poliestere FR Trevira CS
Peso (Weight)	460 gr/mtl
Abrasione (Abrasion resistance)	100.000 cicli (turns) Martindale (UNI EN ISO 12947:2000)
Solidità alla luce / Light fastness	5/6 (EN ISO 105 B02)
Resistenza al fuoco (Fire resistance)	Classe 1 ITALIA M1 – FRANCIA B1 DIN 4102 GERMANIA BS 5258 Crib 5 EN 1021-1/2
Manutenzione / Maintenance	Usare con regolarità l'aspirapolvere a beccuccio liscio, senza spazzolare (Use the vacuum-cleaner with smooth spout regularly, don't brush)

KING/L

Composizione (Composition)	100% Poliestere FR Trevira CS
Peso (Weight)	365 gr/mtl
Abrasione (Abrasion resistance)	70.000 cicli (turns) Martindale (UNI EN ISO 12947:2000)
Solidità alla luce / Light fastness	6 (EN ISO 105 B02)
Resistenza al fuoco (Fire resistance)	Classe 1 ITALIA M1 – FRANCIA B1 DIN 4102 GERMANIA BS 5258 Crib 5 EN 1021-1/2
Manutenzione / Maintenance	Usare con regolarità l'aspirapolvere a beccuccio liscio, senza spazzolare (Use the vacuum-cleaner with smooth spout regularly, don't brush)

ZEUS/FR

Composizione (Composition)	85% PVC 5% CO 10% PL CO=Cotton - PL=Poliestere
Peso (Weight)	840 gr/mtl
Abrasione (Abrasion resistance)	51.200 cicli (turns) Martindale (UNI EN ISO 5470-2)
Solidità alla luce / Light fastness	6/7 (light colours) – 4/5 (dark colours) (EN ISO 105 B02)
Resistenza al fuoco (Fire resistance)	Classe 1 ITALIA BS 5258 Crib 5 EN 1021-1/2

Manutenzione / Maintenance Con acqua e sapone neutro, non usare prodotti chimici
(Bath cloth and soap, do not use chemical products)

La superficie esterna dell'articolo ZEUS FR è ANTIBATTERICA (test AATCC-147-07 Staphylococcus aureus ATCC 6538) e ANTIFUNGINA (test AATCC 30/98 Penicillium chrysogenum ATCC 9179). Il prodotto è privo di ftalati
The surface of quality ZEUS FR is ANTIBACTERIAL (AATCC test-147-07 Staphylococcus aureus ATCC 6538) and ANTIMYCOTIC (test AATCC 30/98 Penicillium chrysogenum ATCC 9179) and PHTHALATES free

TREVI/TREVI STYLE

Composizione (Composition)	100% Poliestere FR Trevira CS
Peso (Weight)	630 gr/mtl
Abrasione (Abrasion resistance)	100.000 cicli (turns) (UNI EN ISO 5470-2)
Solidità alla luce / Light fastness	5 (EN ISO 105 B02)
Resistenza al fuoco (Fire resistance)	Classe 1 ITALIA M1 – FRANCIA B1 DIN 4102 GERMANIA Fire Protection Classification 5.2 - Svizzera BS 5258 Crib 5 EN 1021-1/2
Manutenzione / Maintenance	Usare con regolarità l'aspirapolvere a beccuccio liscio, senza spazzolare (Use the vacuum-cleaner with smooth spout regularly, don't brush)

ELBA/S

Composizione (Composition)	100% Poliestere FR Trevira CS
Peso (Weight)	510 gr/mtl
Abrasione (Abrasion resistance)	50.000 cicli (turns) Martindale (UNI EN ISO 12947:2000)
Solidità alla luce / Light fastness	5 (EN ISO 105 B02)
Resistenza al fuoco (Fire resistance)	Classe 1 ITALIA M1 – FRANCIA B1 DIN 4102 GERMANIA BS 5258 Crib 5 EN 1021-1/2
Manutenzione / Maintenance	Usare con regolarità l'aspirapolvere a beccuccio liscio, senza spazzolare (Use the vacuum-cleaner with smooth spout regularly, don't brush)

ROMA/FR

Composizione (Composition)	100% Fibra Modacrilica
Peso (Weight)	620 gr/mtl
Abrasione (Abrasion resistance)	60.000 cicli (turns) Martindale (UNI EN ISO 12947:2000)
Solidità alla luce / Light fastness	5 (EN ISO 105 B02)
Resistenza al fuoco (Fire resistance)	Classe 1 ITALIA
Manutenzione / Maintenance	Usare con regolarità l'aspirapolvere a beccuccio liscio, senza spazzolare (Use the vacuum-cleaner with smooth spout regularly, don't brush)